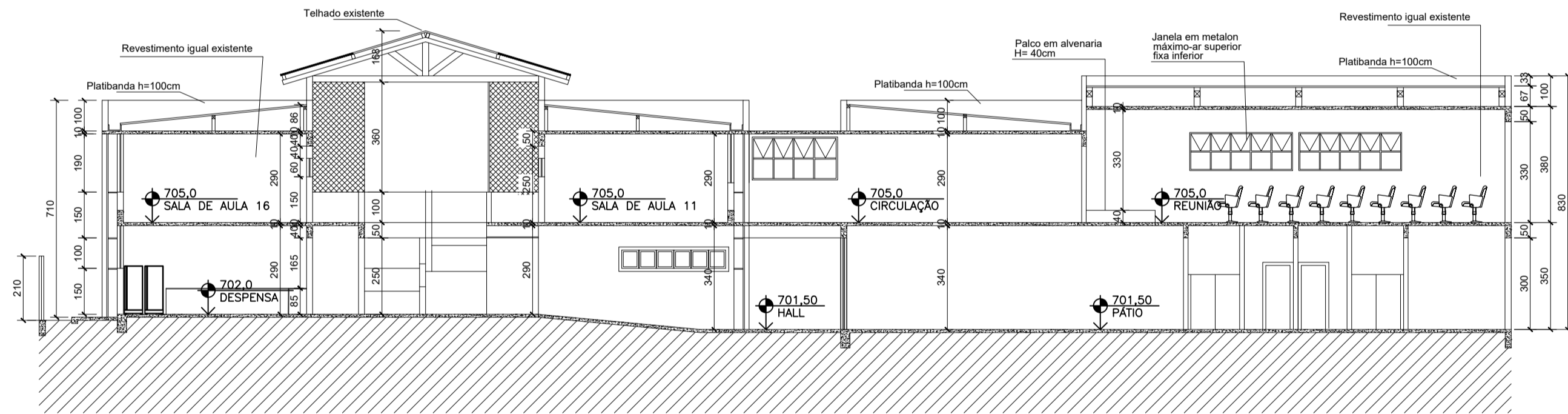
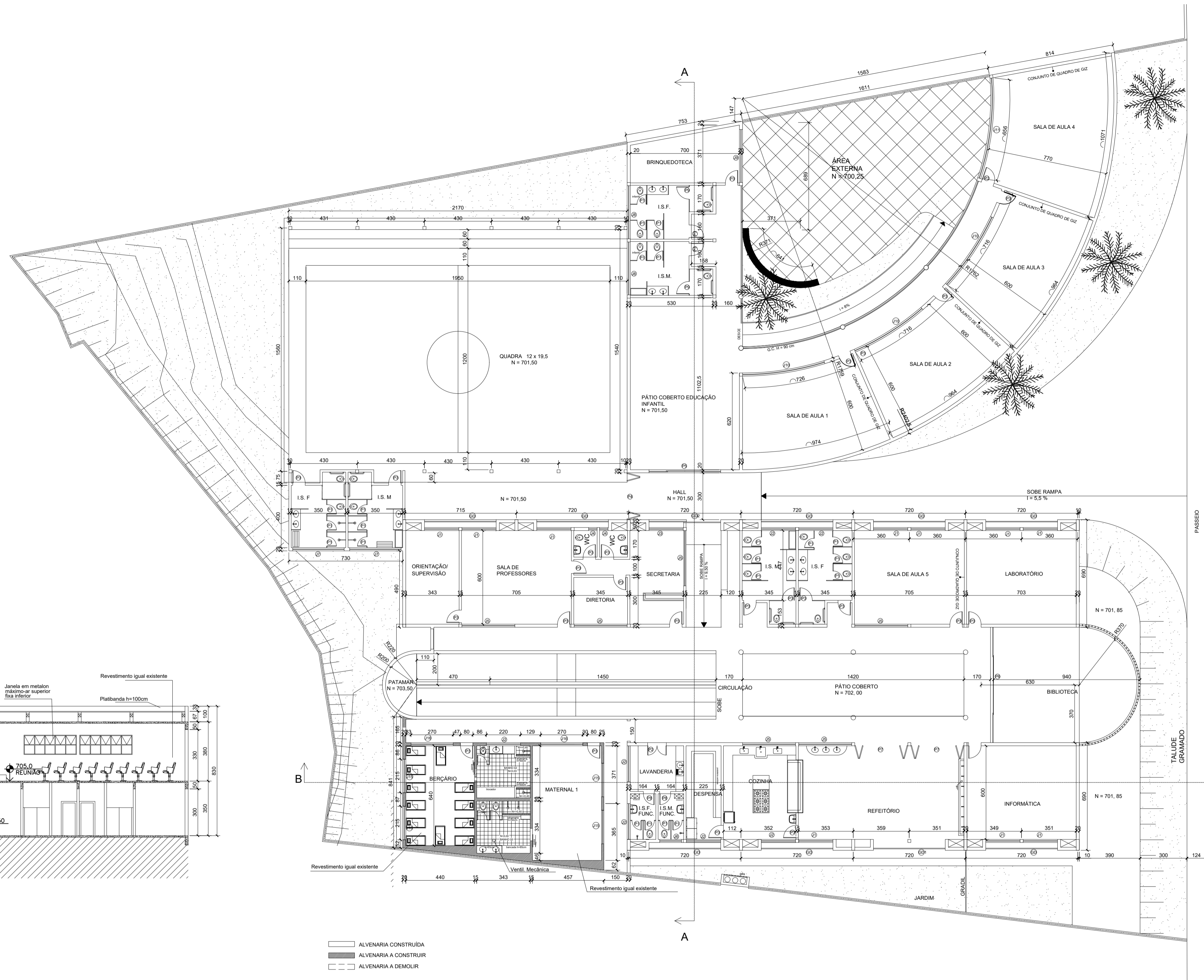
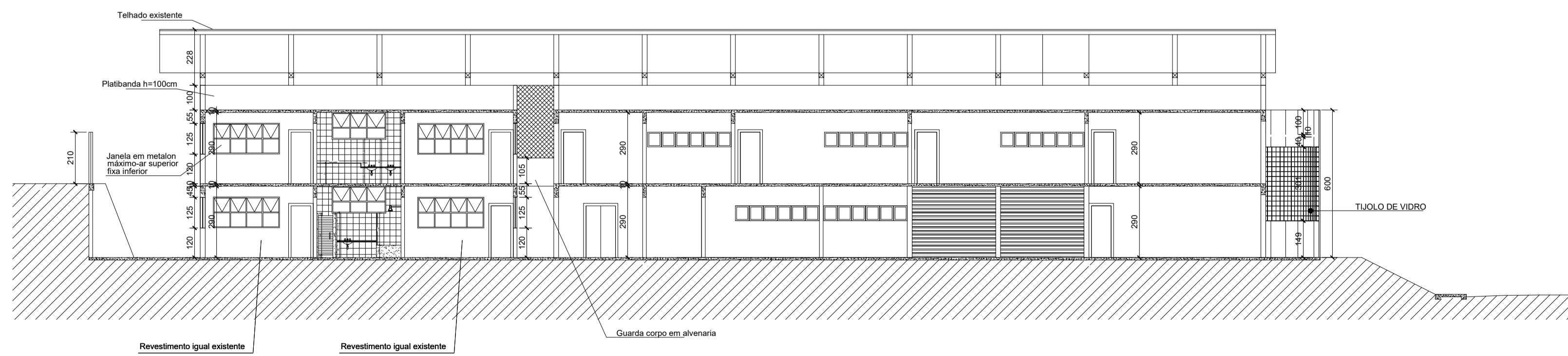


LEGENDA ESQUADRIAS			
JANELAS	PORTAS	GRADE	
J1= 220 x 160/130	J10= 500 x 150/150	P1= 60 x 180	GD=460 x 590
J2= 220 x 110/180	J11= 650 x 150/150	P2= 2 x (60 x 210)	GD1=460 x 590
J3= 220 x 120/130	J12= 740 x 150/150	P3= 80 x 210	GD2=460 x 640
J4= 55 x 70/180	J13= 200 x 160/130	P4= 300 x 300	
J5= 340 x 60/150	J14= 280 x 70/180	P5= 460 x 300	
J6= 140 x 110/180	J15= 215 x 125/120	P6= 740 x 210	
J7= 330 x 70/180	J16= 270 x 125/120	P7= 340 x 250	
J8= 340 x 60/180 c/grade	J17= 300 x 150/150	P8= 70 x 210	
J9= 340 x 110/180		P9= 60 x 180	



CORTE AA
ESCALA 1/150



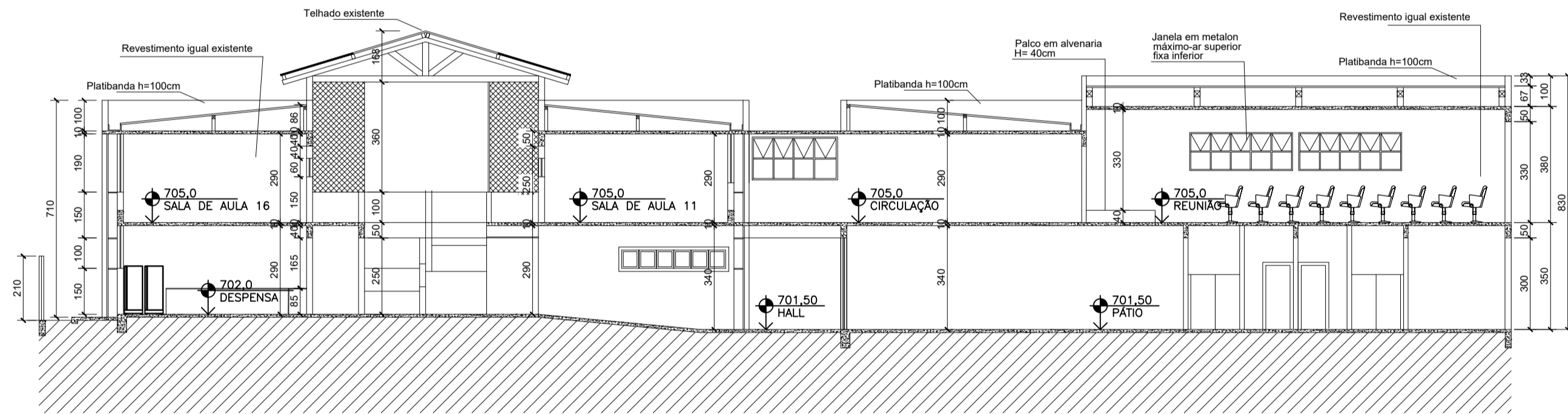
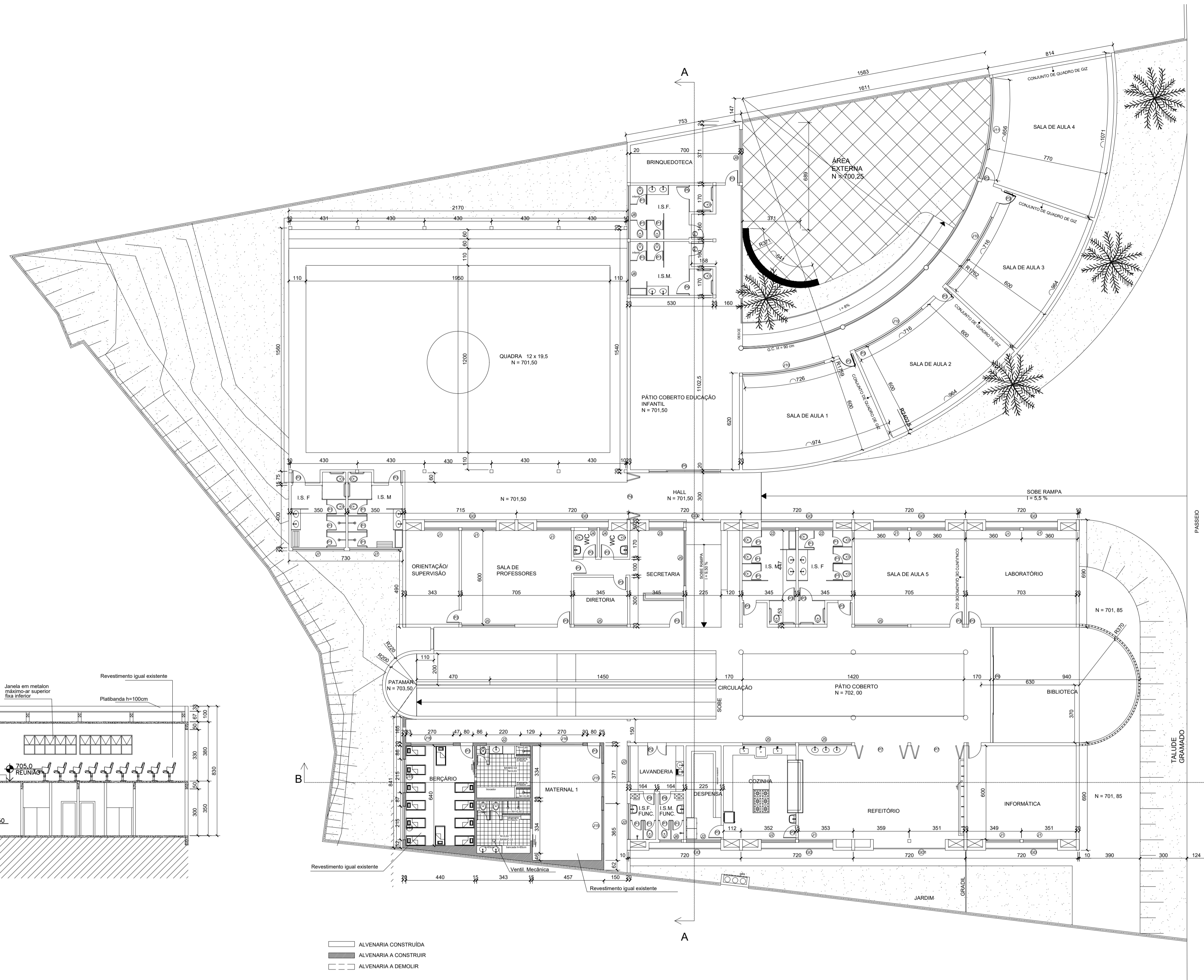
CORTE BB
ESCALA 1/150

- ALVENARIA CONSTRUÍDA
- ALVENARIA A CONSTRUIR
- ALVENARIA A DEMOLIR

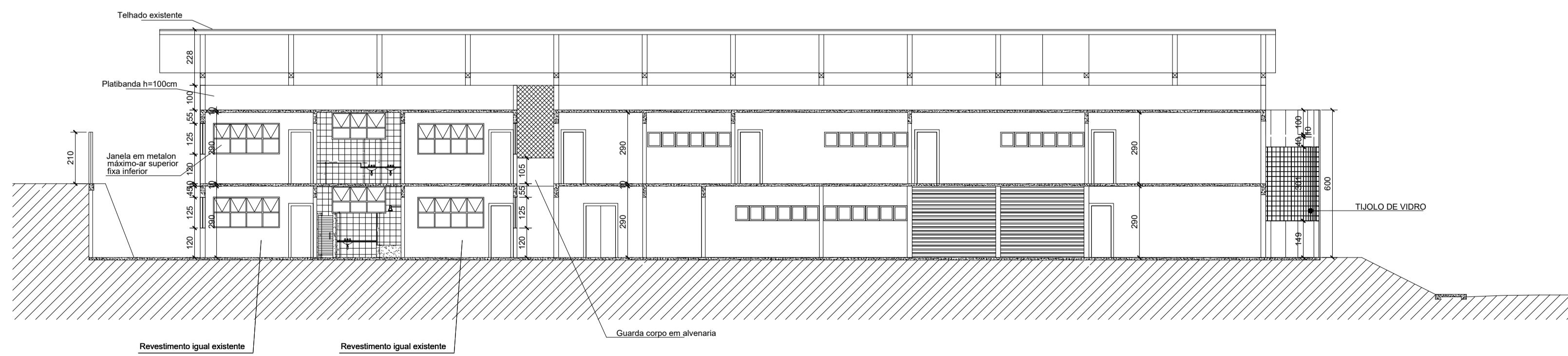
ESCOLA ROÇA GRANDE - 1º PAVTO
ESCALA 1/150

ESCOLA ROÇA GRANDE		
RESP. TÉCNICO	CAU	A28078-0
MILENE CRISTINE PINTO	ESCALA	NO DESENHO
DESENHO TÉCNICO	FOLHA	02/05
STEFANNY CAROLINE ALVES APOLOÔNIO	DATA	SETEMBRO 2020
LOCAL		

LEGENDA ESQUADRIAS			
JANELAS	PORTAS	GRADE	
J1= 220 x 160/130	J10= 500 x 150/150	P1= 60 x 180	GD=460 x 590
J2= 220 x 110/180	J11= 650 x 150/150	P2= 2 x (60 x 210)	GD1=460 x 590
J3= 220 x 120/130	J12= 740 x 150/150	P3= 80 x 210	GD2=460 x 640
J4= 55 x 70/180	J13= 200 x 160/130	P4= 300 x 300	
J5= 340 x 60/150	J14= 280 x 70/180	P5= 460 x 300	
J6= 140 x 110/180	J15= 215 x 125/120	P6= 740 x 210	
J7= 330 x 70/180	J16= 270 x 125/120	P7= 340 x 250	
J8= 340 x 60/180 c/grade	J17= 300 x 150/150	P8= 70 x 210	
J9= 340 x 110/180		P9= 60 x 180	



CORTE AA
ESCALA 1/150



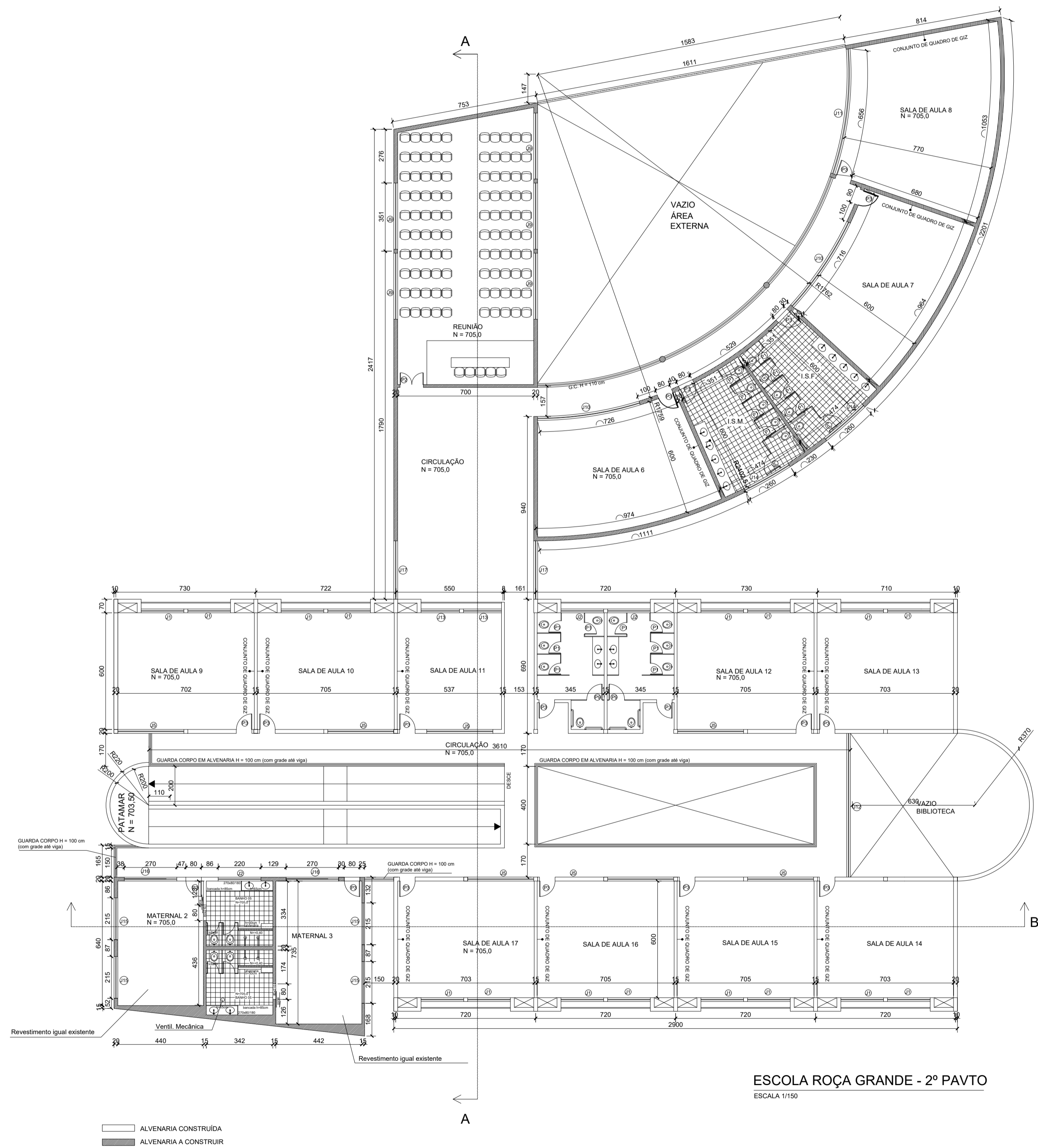
CORTE BB
ESCALA 1/150

- ALVENARIA CONSTRUIDA
- ALVENARIA A CONSTRUIR
- ALVENARIA A DEMOLIR

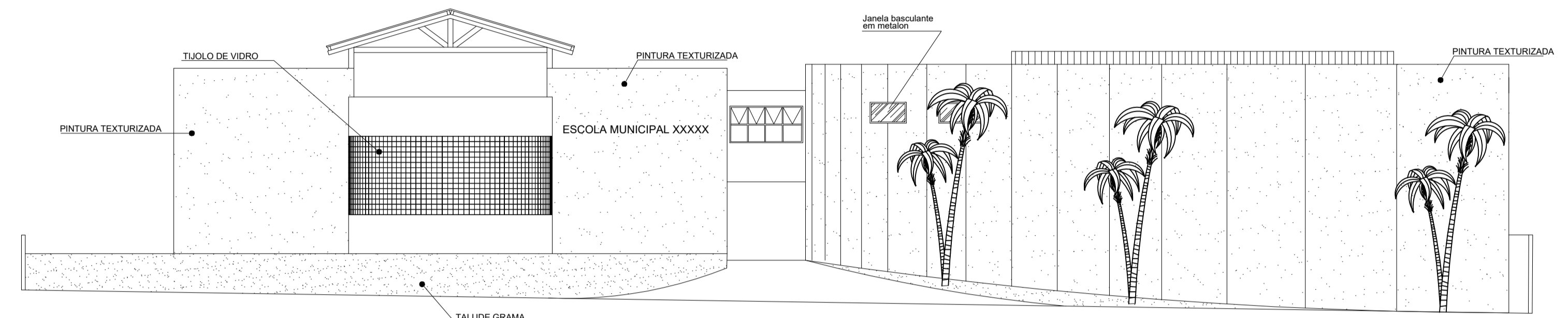
ESCOLA ROÇA GRANDE - 1º PAVTO
ESCALA 1/150

ESCOLA ROÇA GRANDE		
RESP. TÉCNICO	CAU	A28078-0
MILENE CRISTINE PINTO	ESCALA	NO DESENHO
DESENHO TÉCNICO	FOLHA	02/05
STEFANNY CAROLINE ALVES APOLOÔNIO	DATA	SETEMBRO 2020
LOCAL		

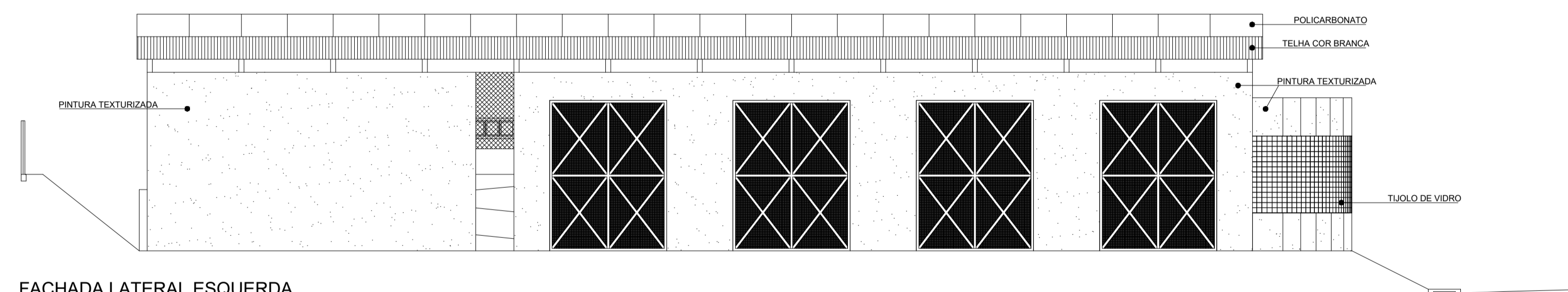
LEGENDA ESQUADRIAS			
JANELAS	PORTAS	GRADE	
J1= 220 x 160/130	J10= 500 x 150/150	P1= 60 x 180	GD=480 x 590
J2= 220 x 110/180	J11= 650 x 150/150	P2= 2 x (60 x 210)	GD1=480 x 590
J3= 220 x 120/130	J12= 740 x 150/150	P3= 80 x 210	GD2=480 x 640
J4= 55 x 70/180	J13= 200 x 160/130	P4= 300 x 300	
J5= 340 x 60/150	J14= 260 x 70/180	P5= 460 x 300	
J6= 140 x 110/180	J15= 215 x 125/120	P6= 740 x 210	
J7= 330 x 70/180	J16= 270 x 125/120	P7= 340 x 250	
J8= 340 x 60/180 c/grade	J17= 300 x 150/150	P8= 70 x 210	
J9= 340 x 110/180		P9= 80 x 180	



ESCOLA ROÇA GRANDE - 2º PAVTO
ESCALA 1/150



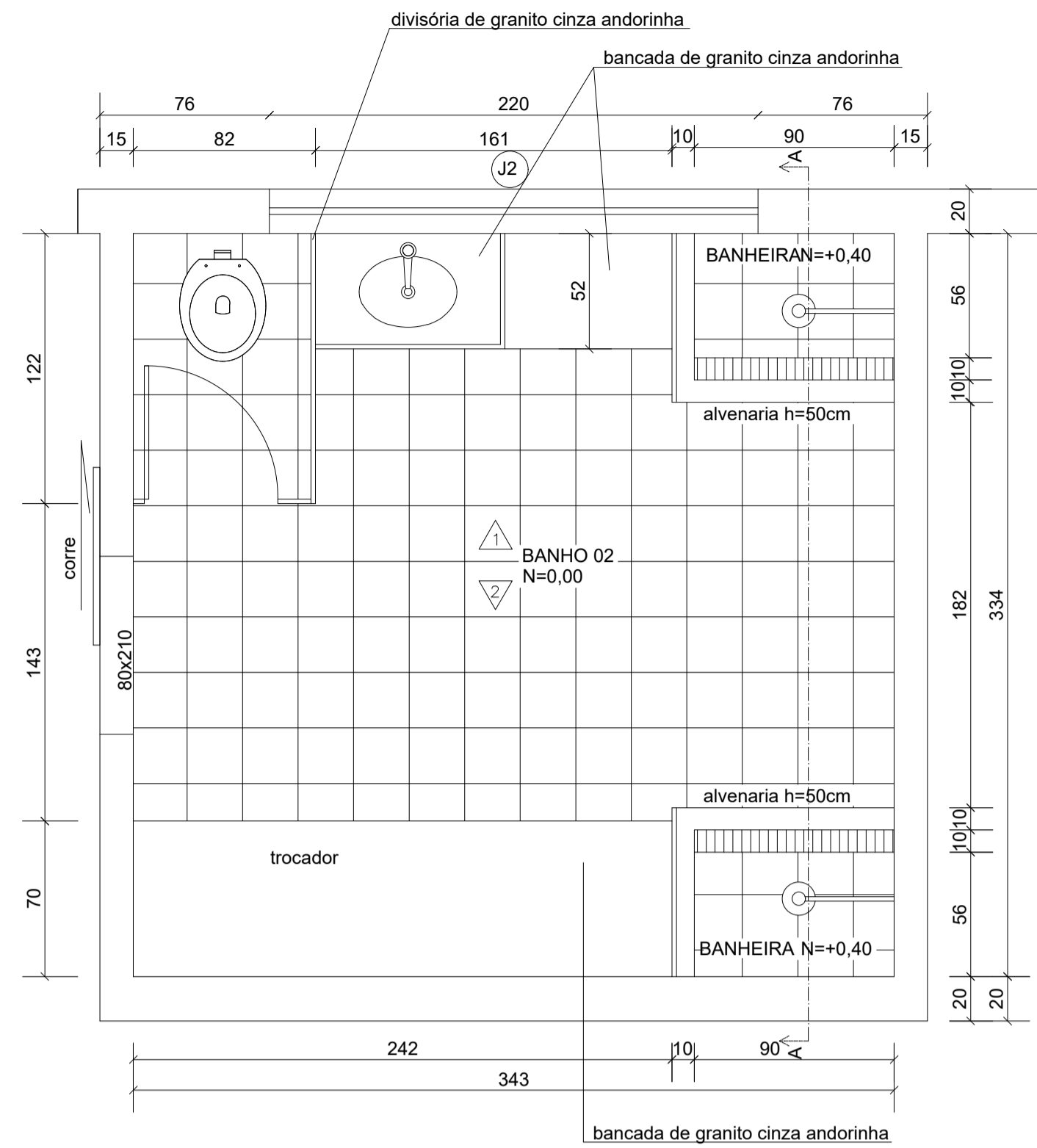
FACHADA FRONTAL
ESCALA 1/150



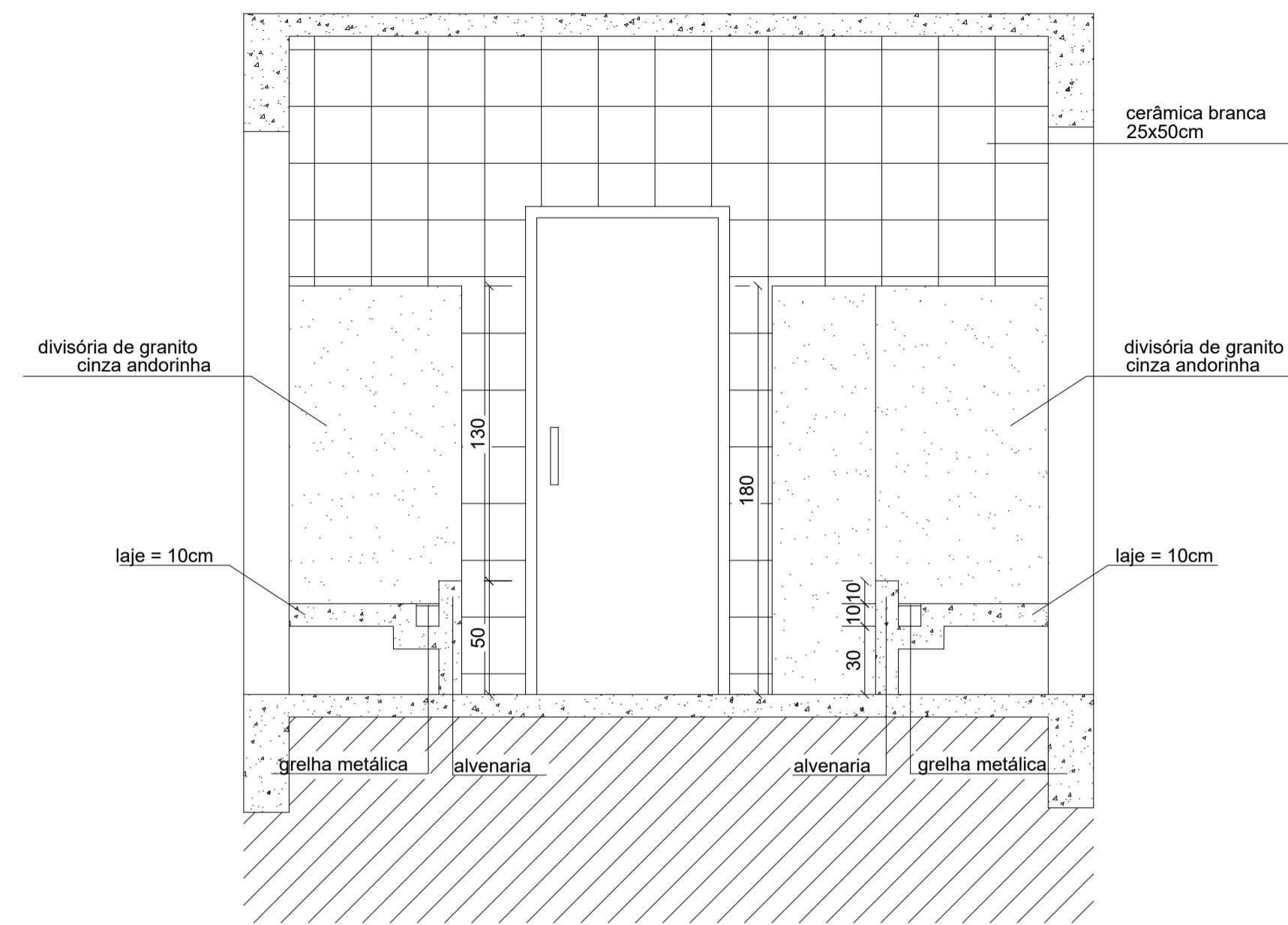
FACHADA LATERAL ESQUERDA
ESCALA 1/150

ESCOLA ROÇA GRANDE

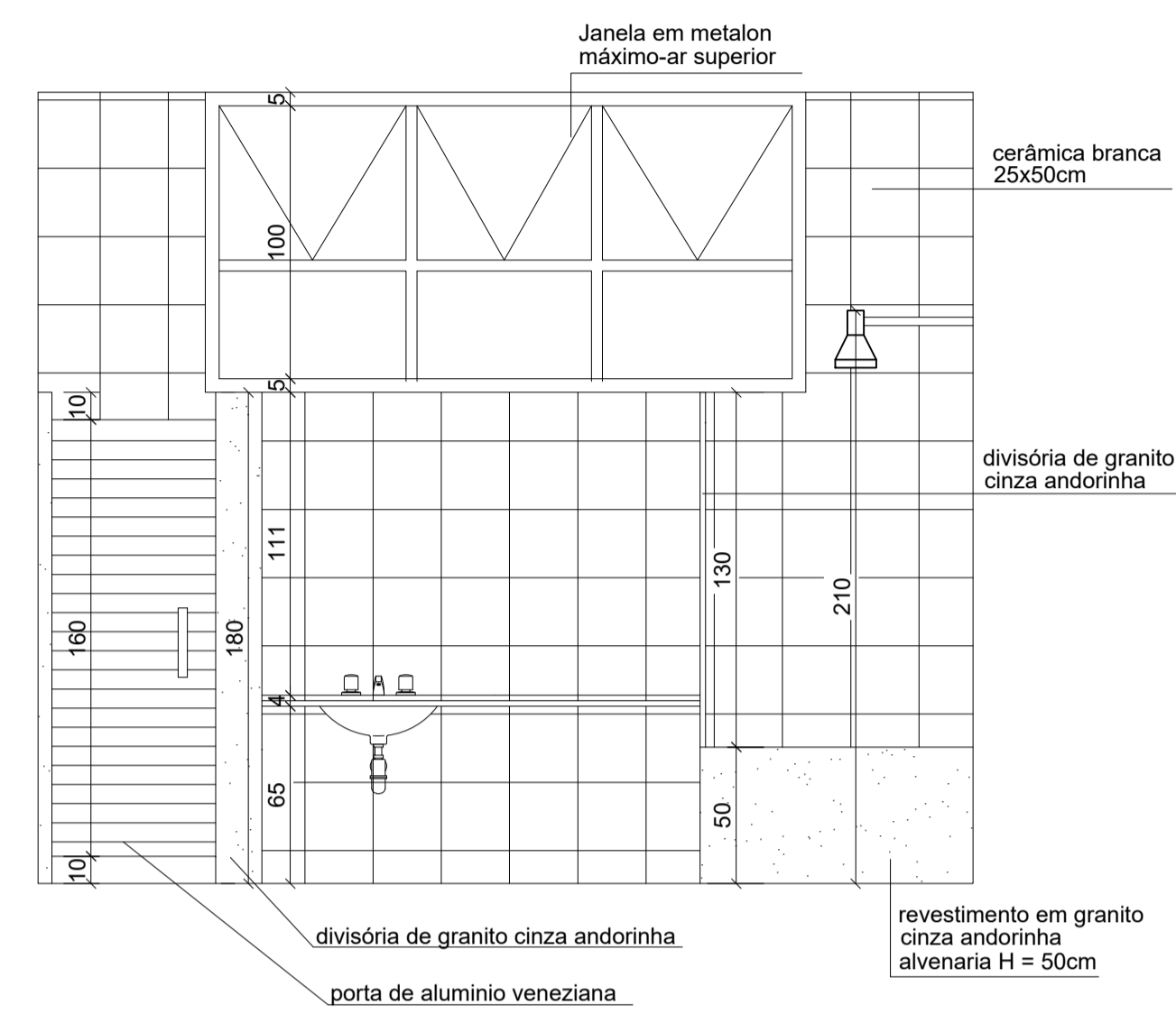
RESP. TÉCNICO	CAU
MILENE CRISTINE PINTO	A28078-0
DESENHO TÉCNICO	ESCALA
STEFANNY CAROLINE ALVES APOLOVINO	NO DESENHO
LOCAL:	DATA:
	SETEMBRO 2020
	FOLHA:
	03/05



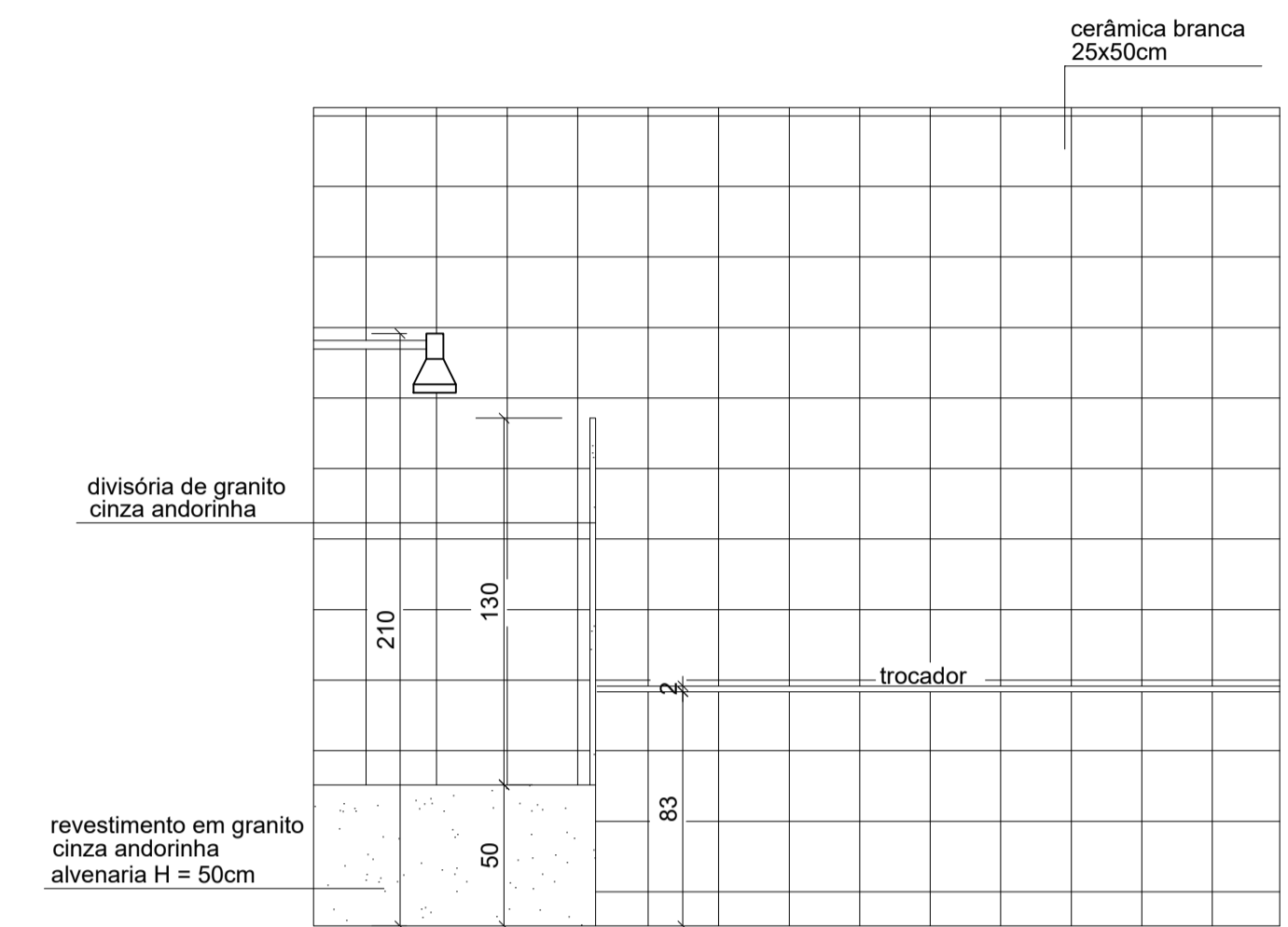
VISTA SUPERIOR BANHO 02
ESCALA 1/25



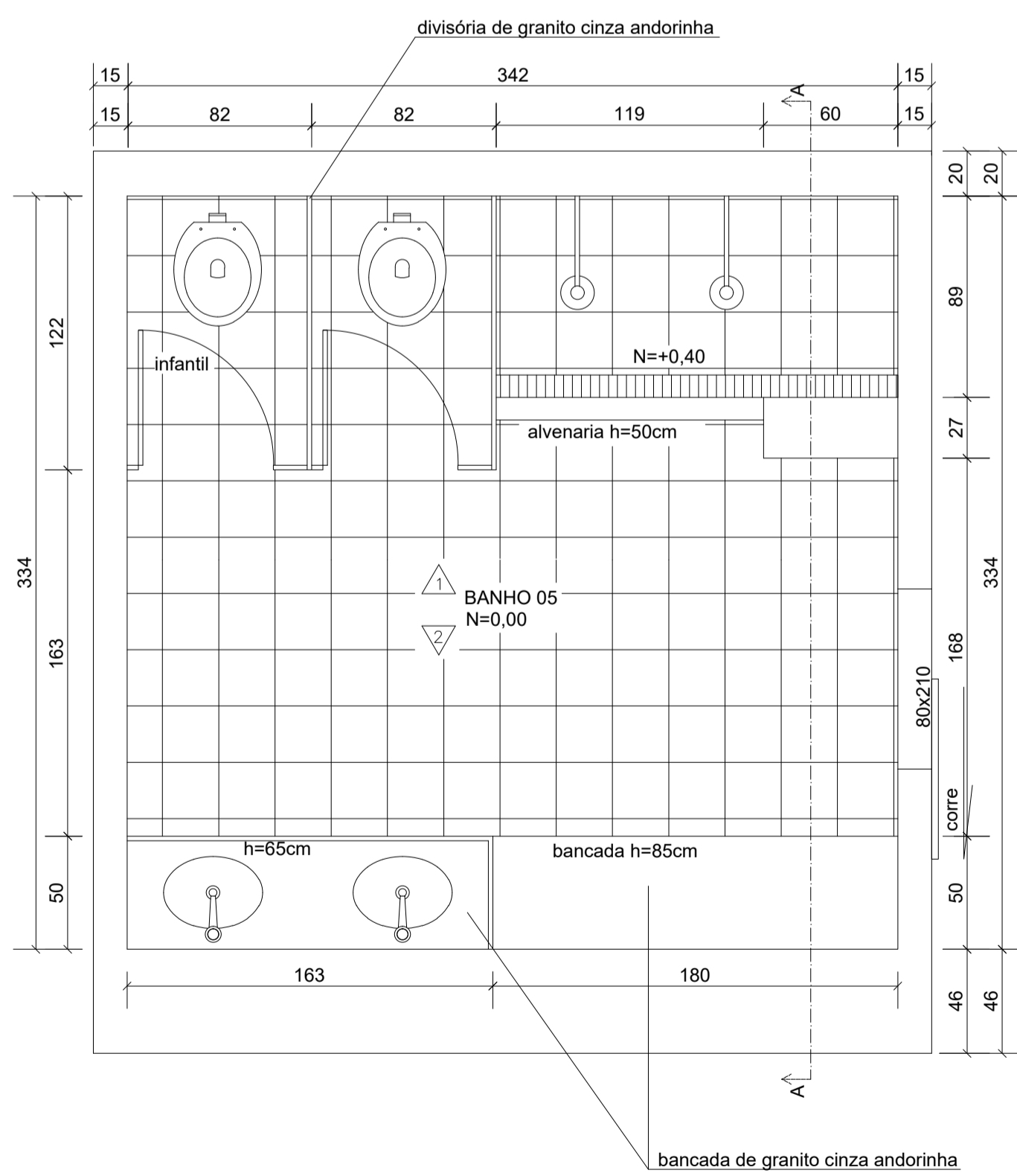
CORTE AA BANHO 02
ESCALA 1/25



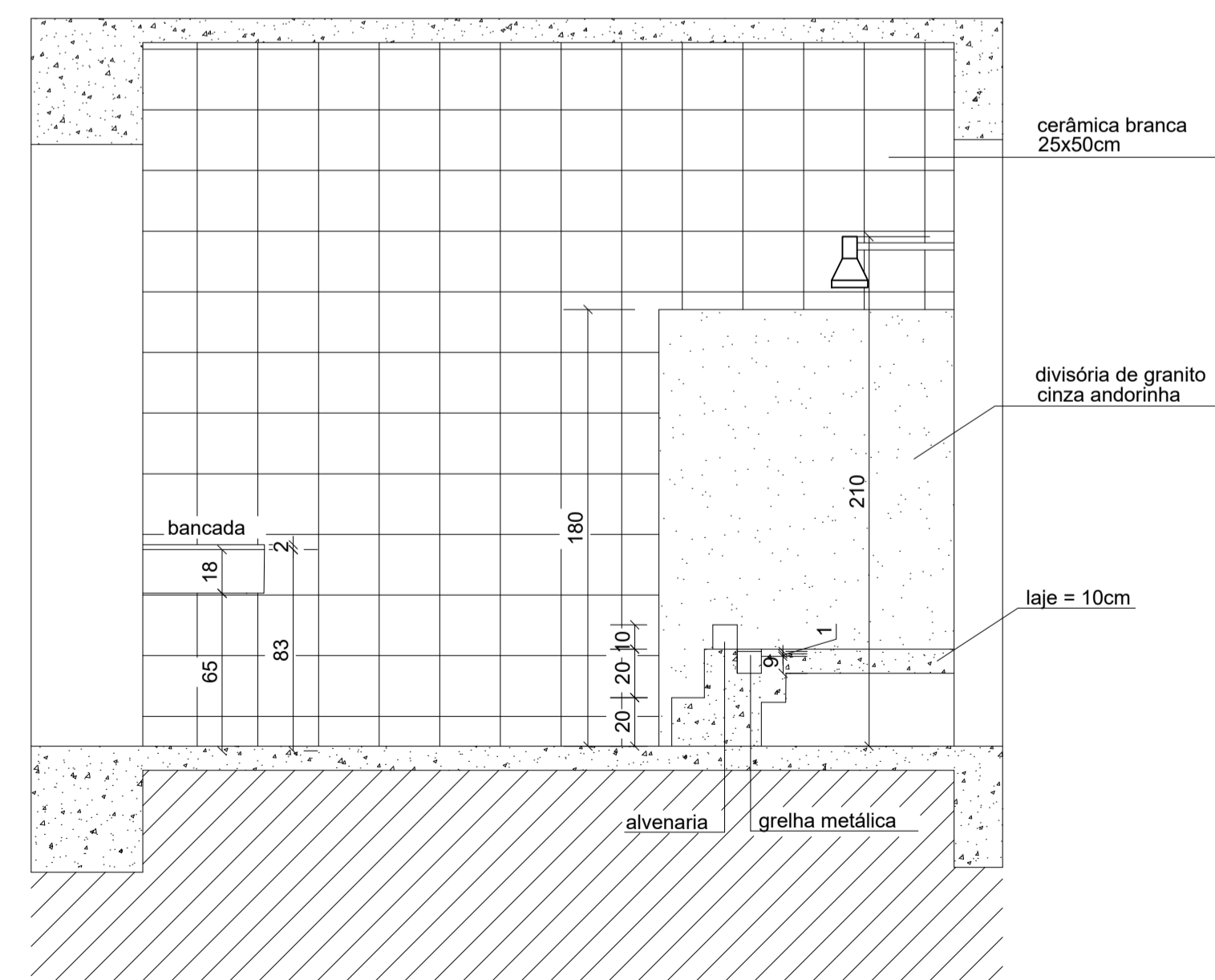
VISTA 1 BANHO 02
ESCALA 1/25



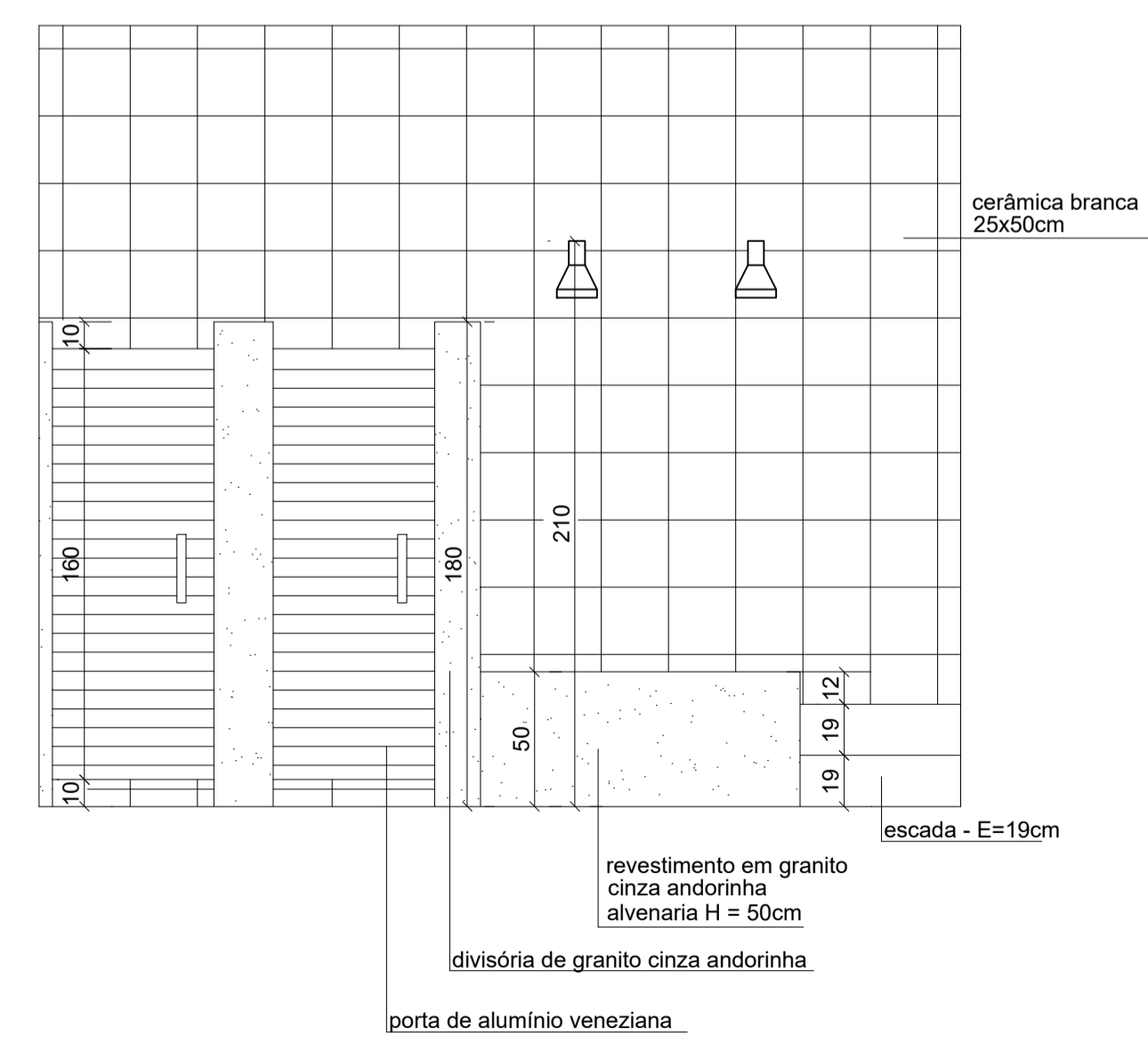
VISTA 2 BANHO 02
ESCALA 1/25



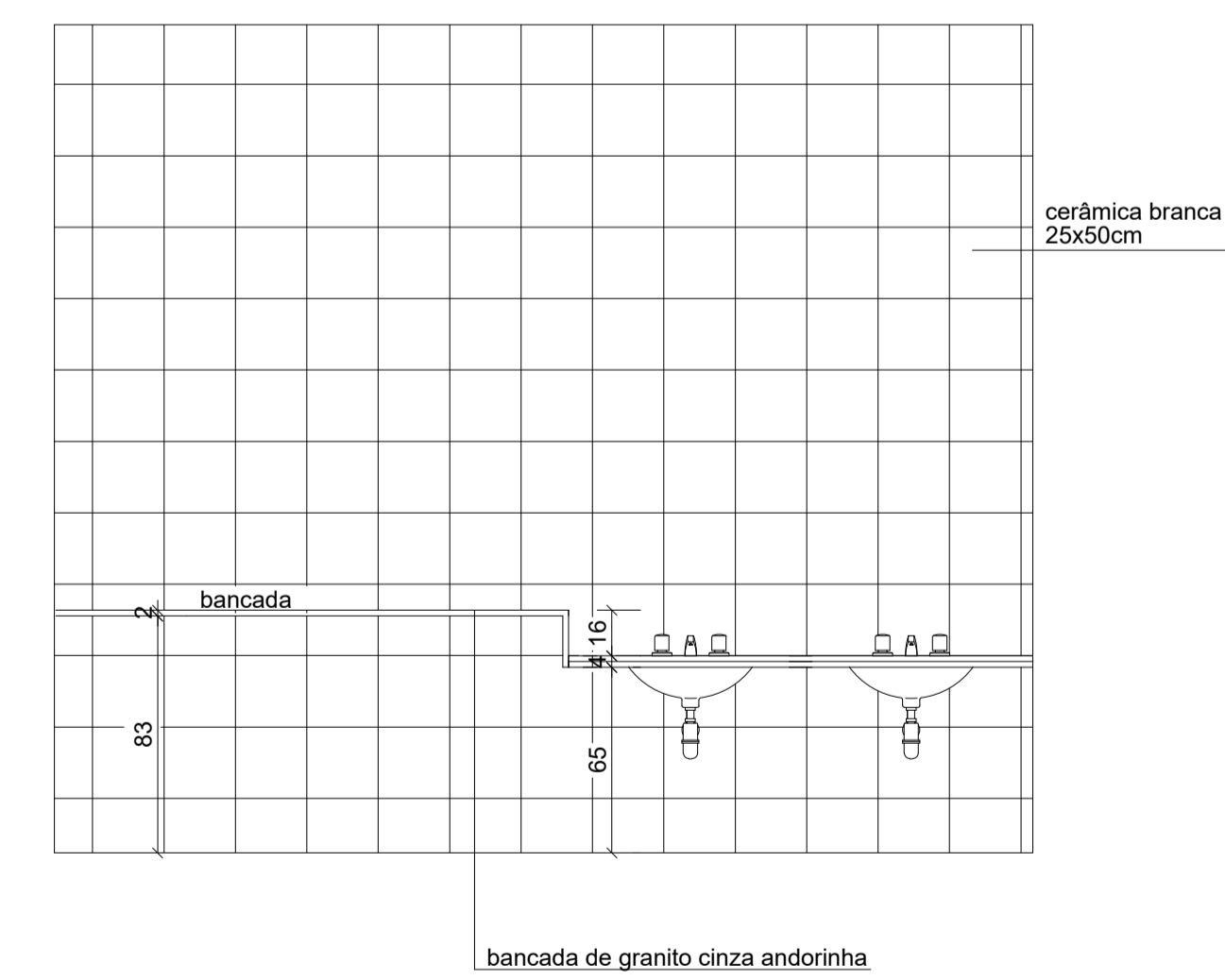
VISTA SUPERIOR BANHO 05
ESCALA 1/25



CORTE AA BANHO 05
ESCALA 1/25

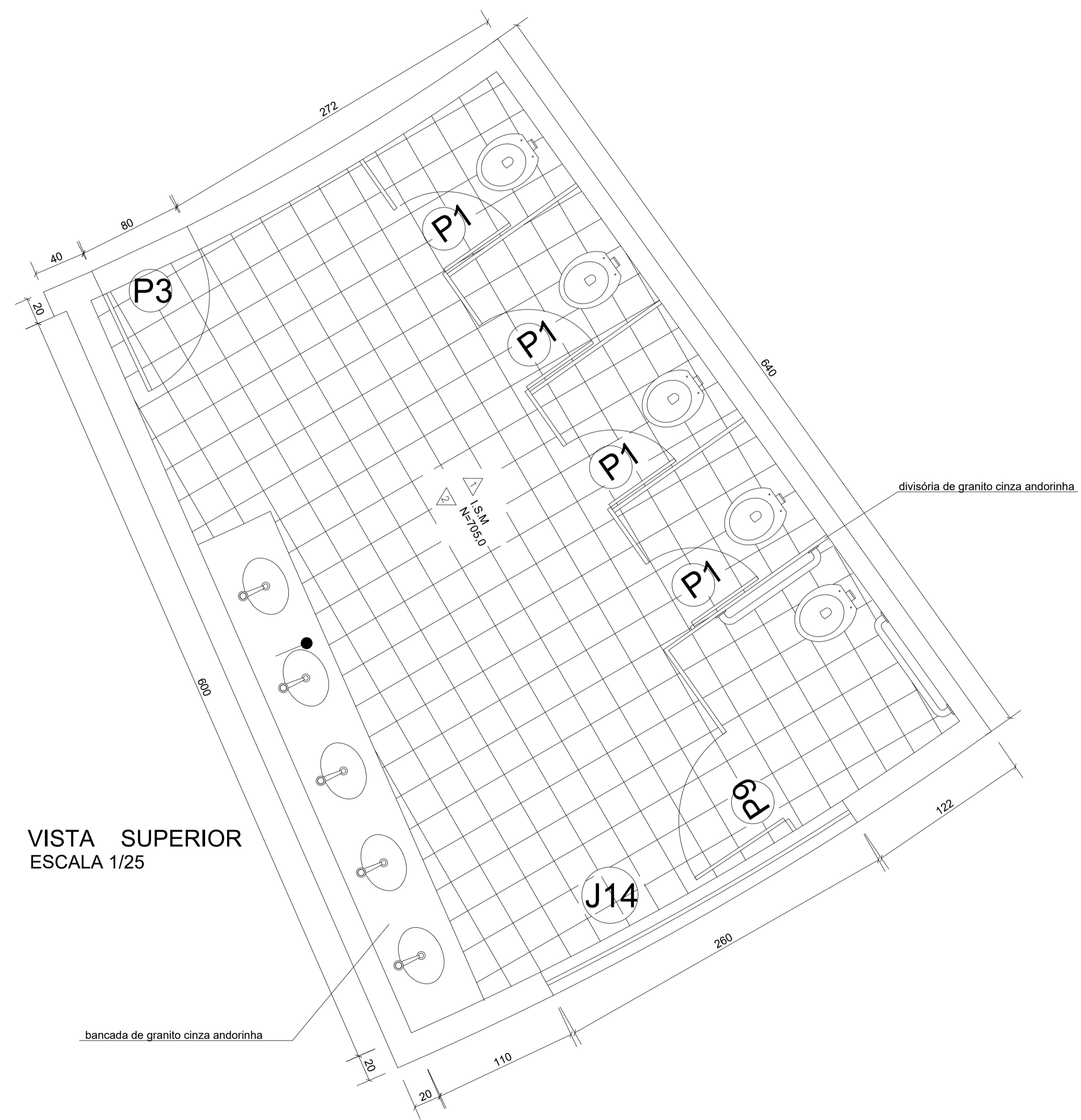


VISTA 1 BANHO 05
ESCALA 1/25

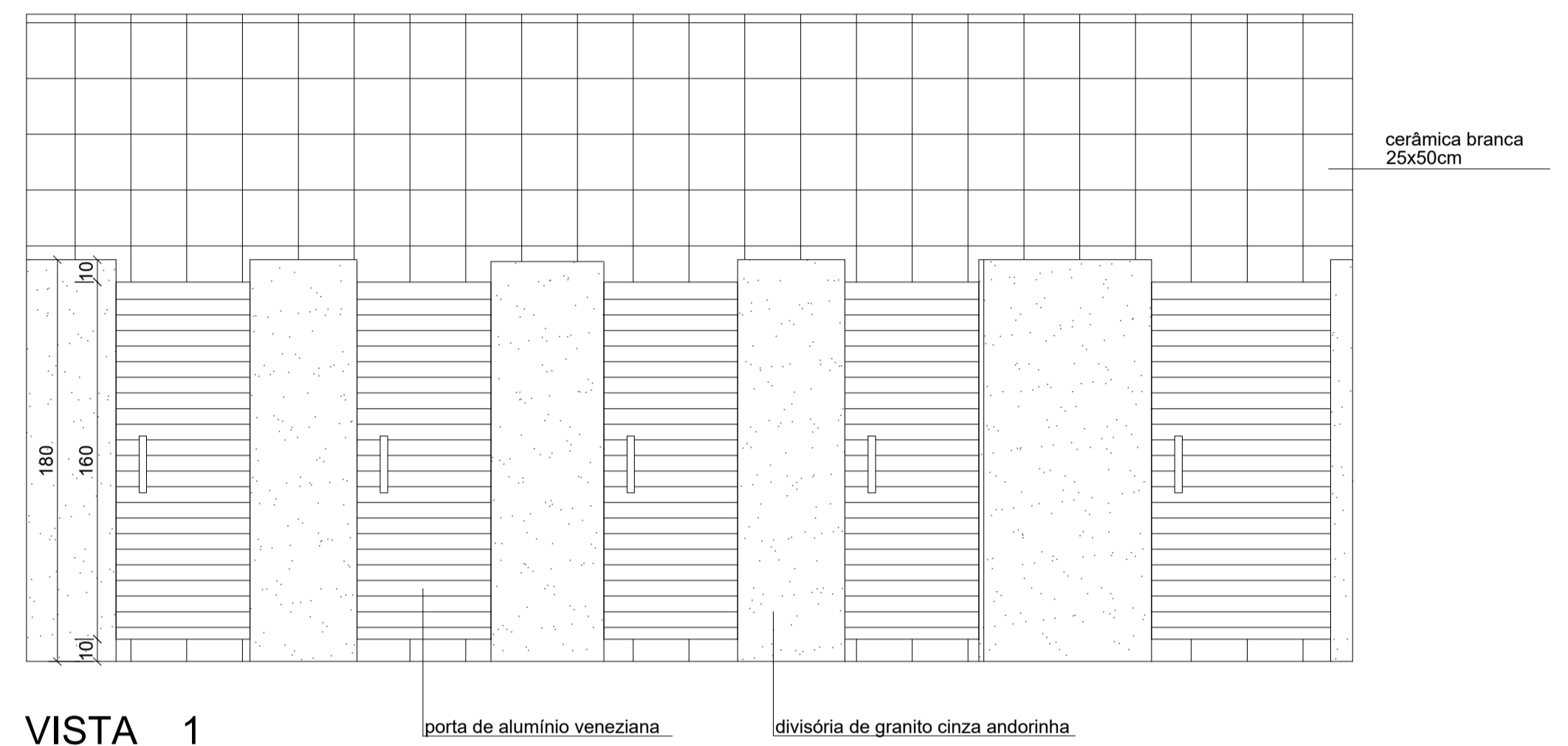


VISTA 2 BANHO 05
ESCALA 1/25

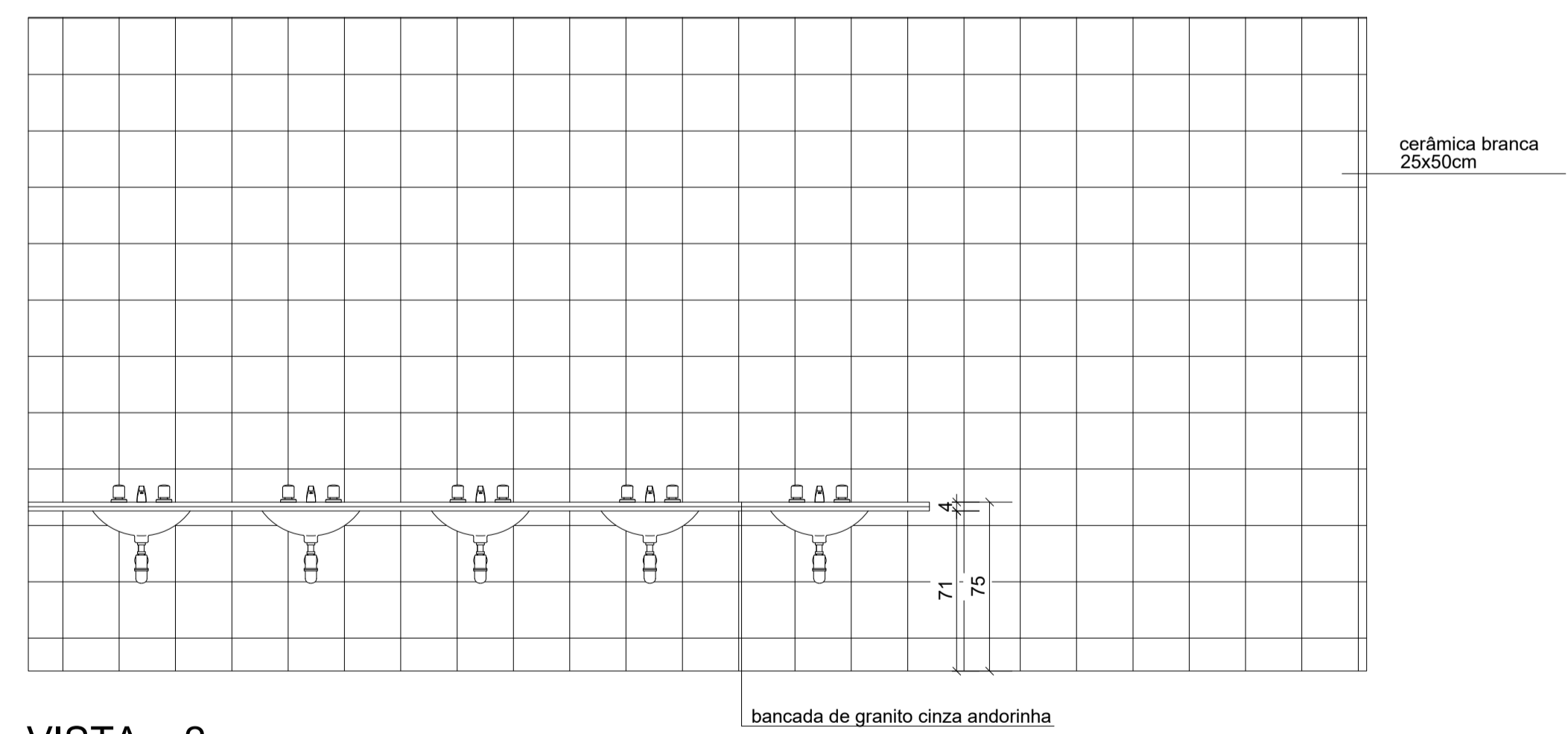
ESCOLA ROÇA GRANDE		
RESP. TÉCNICO	CAU	A28078-0
MILENE CRISTINE PINTO	ESCALA	NO DESENHO
DESENHO TÉCNICO	DATA	FOLHA
STEFANNY CAROLINE ALVES APOLOVINO	SETEMBRO 2020	04/05
LOCAL:		



VISTA SUPERIOR
ESCALA 1/25



VISTA 1
ESCALA 1/25



VISTA 2
ESCALA 1/25

ESCOLA ROÇA GRANDE		
RESP. TÉCNICO	CAU	
MILENE CRISTINE PINTO	A28078-0	
DESENHO TÉCNICO	ESCALA	
STEFANNY CAROLINE ALVES APOLOVINO	NO DESENHO	
LOCAL:	DATA:	FOLHA:
	SETEMBRO 2020	05/05