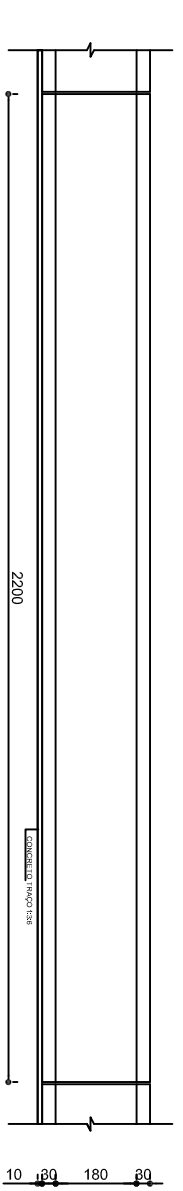
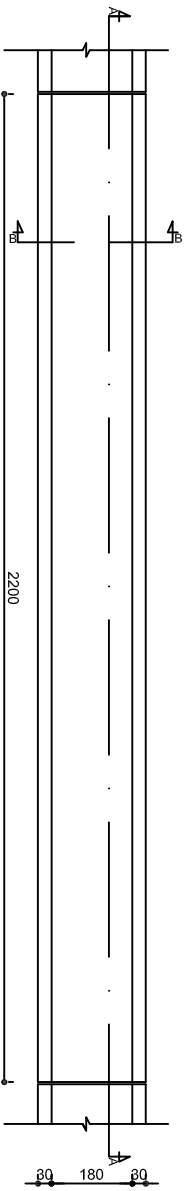



QUADRO DE FERREAGEM					
POS.	(mm)	QUANT.	COMPR. (cm)	COMPR. (m)	
N1	10,0	110	210	231,00	
N2	10,0	110	210	231,00	
N3	10,0	110	180	198,00	
N4	5,0	18	2200	396,00	
N5	5,0	4	2200	88,00	
N6	5,0	4	2200	88,00	
N7	10,0	110	180	198,00	
N8	5,0	4	2200	88,00	
N9	5,0	4	2200	88,00	
N10	10,0	110	210	231,00	
N11	10,0	110	210	231,00	
N12	10,0	110	418	459,80	
N13	10,0	110	256	281,60	
N14	10,0	110	150	165,00	
N15	10,0	110	150	165,00	
N16	10,0	110	256	281,60	
N17	10,0	110	418	459,80	

RESUMO DE FERREAGEM				
ACO	(mm)	COMP. (m)	FESO (kg)	BARRA
CA-50 A	10,0	3132,80	1354,87	281
CA-50 B	5,0	748,00	115,19	63
RESOL TOTAL			2370,06	





PREFEITURA MUNICIPAL DE SABARÁ
ESTADO DE MINAS GERAIS
CIVIL SERVIDOR
SEMOP
SECRETARIA MUNICIPAL DE OBRAS

PROJETO DE GALERIA COLETOIRA DE ÁGUAS PLUVIAIS - RECUPERAÇÃO DE ÁREAS DE INTERESSE SOCIAL - BARRIO CIENTISTAS

ESTRUTURAL

PLANTA, CORTE A - A, CORTE B - B, ARMAÇÃO E QUADRO DE FERREAGEM E RESUMO.

01/01