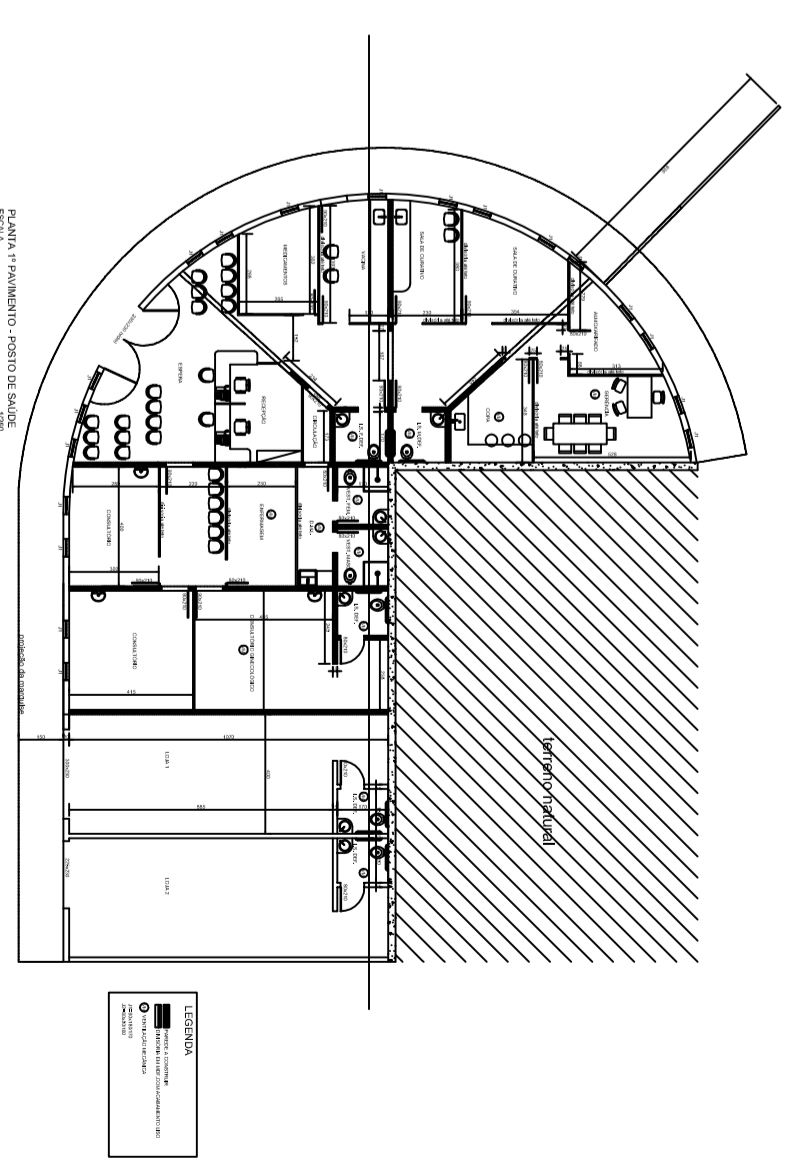
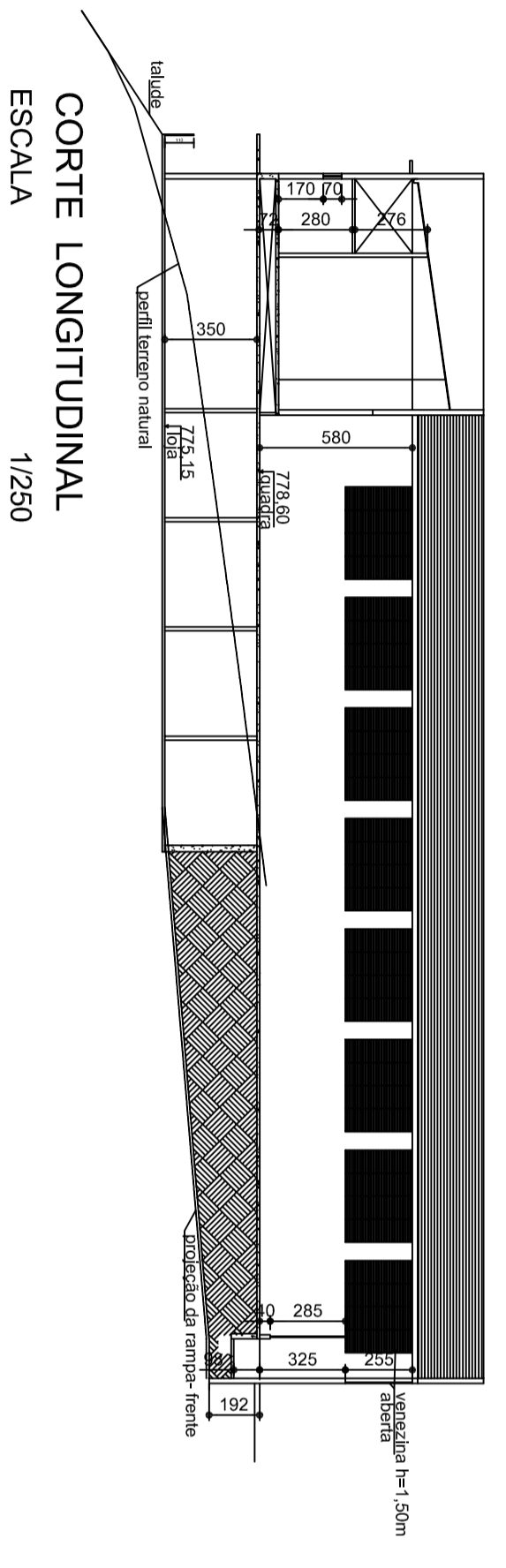


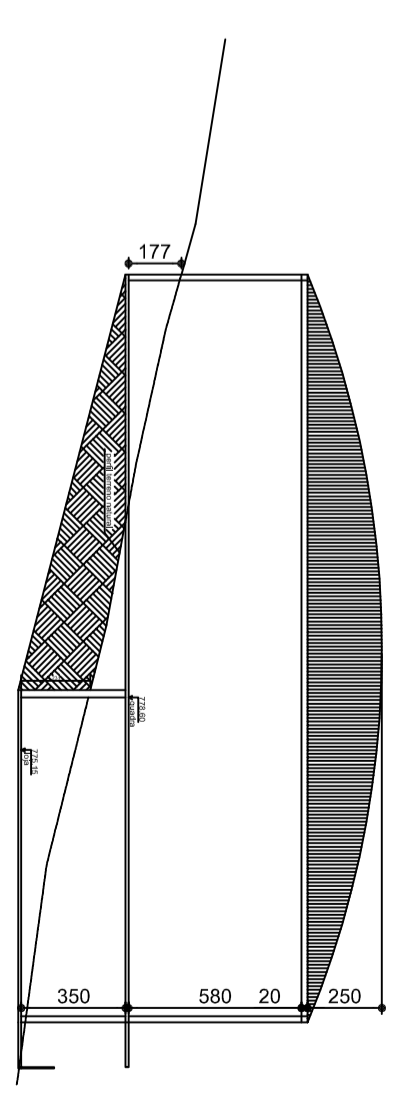
PLANTA NIVEL N = 778.60
ESCALA 1/250



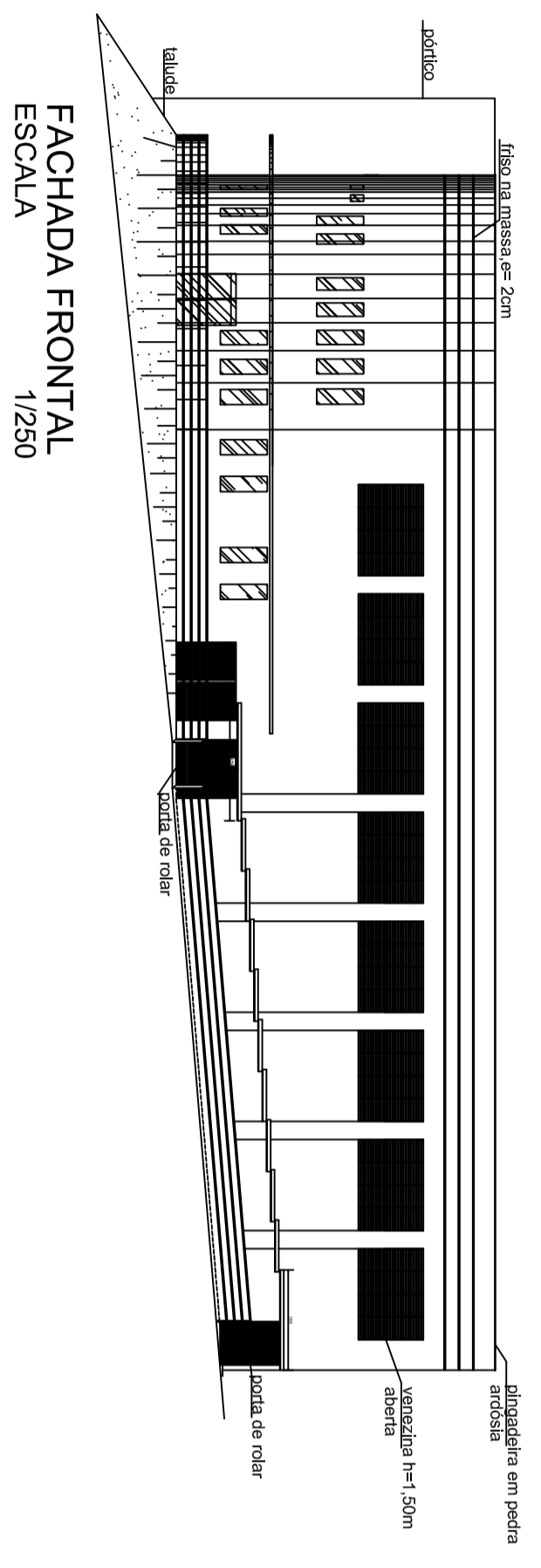
PLANTA 1º ANDAR - PROJETO DE SERRA
ESCALA 1/250



CORTE LONGITUDINAL
ESCALA 1/250



CORTE ESQUEMÁTICO - TRANSVERSAL
ESCALA 1/250



FACHADA FRONTAL
ESCALA 1/250

PREFEITURA MUNICIPAL DE SABARÁ		CREA
PROJETO ARQUITETÔNICO - QUADRA MORADA DA SERRA		ESCALA
RESP. TÉCNICO		NO DESENHO
DETALHE: CORREÇÃO 2		FOLHA
LOCAL	DATA	01/01
MORADA DA SERRA	ABRIL 2010	