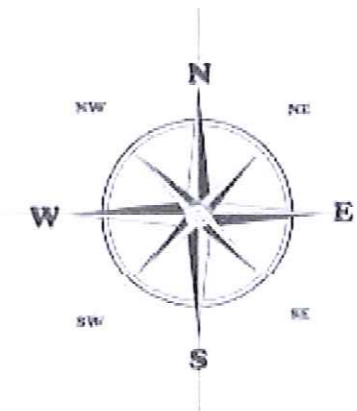
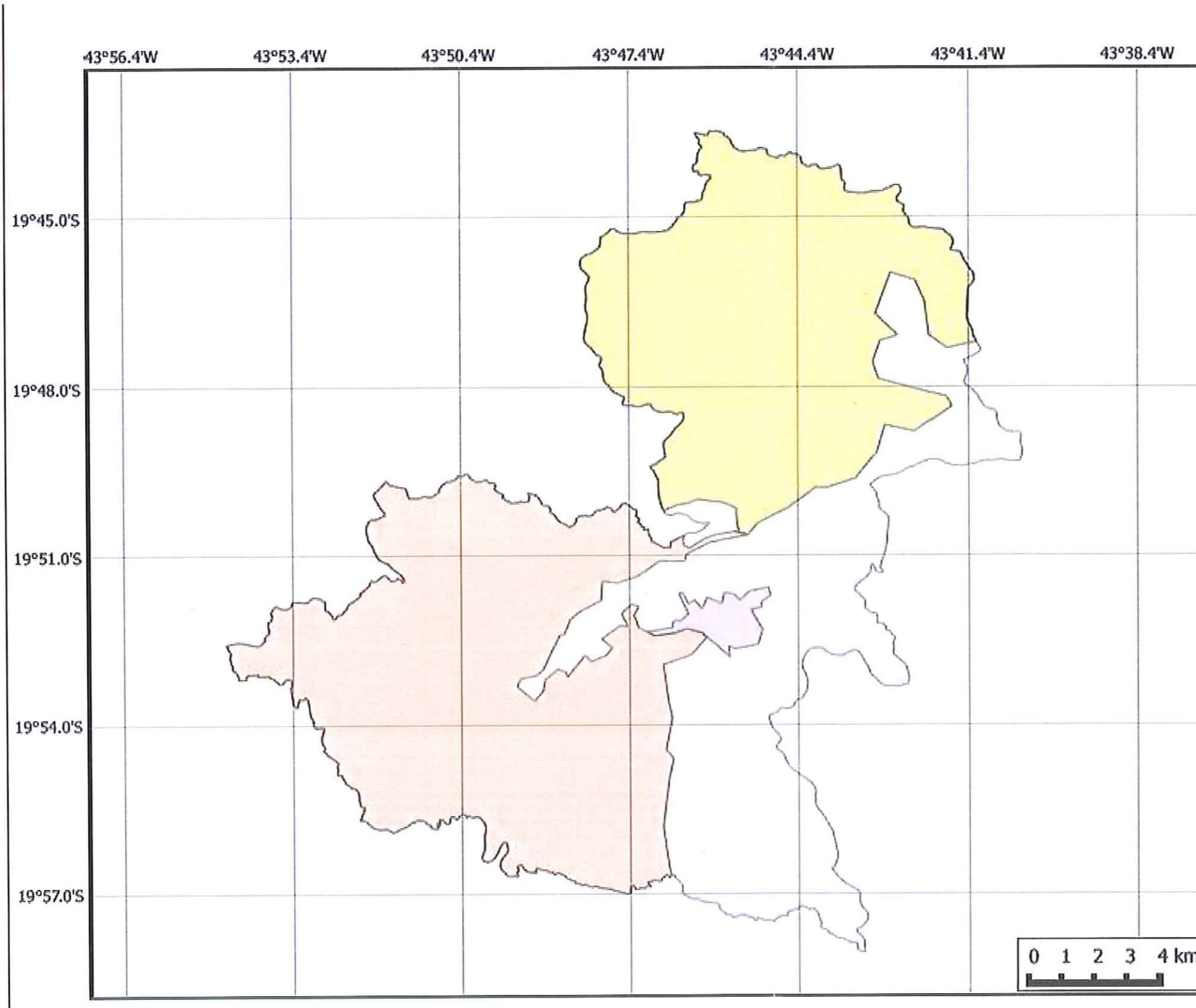








ANEXO IX _ PERÍMETRO URBANO



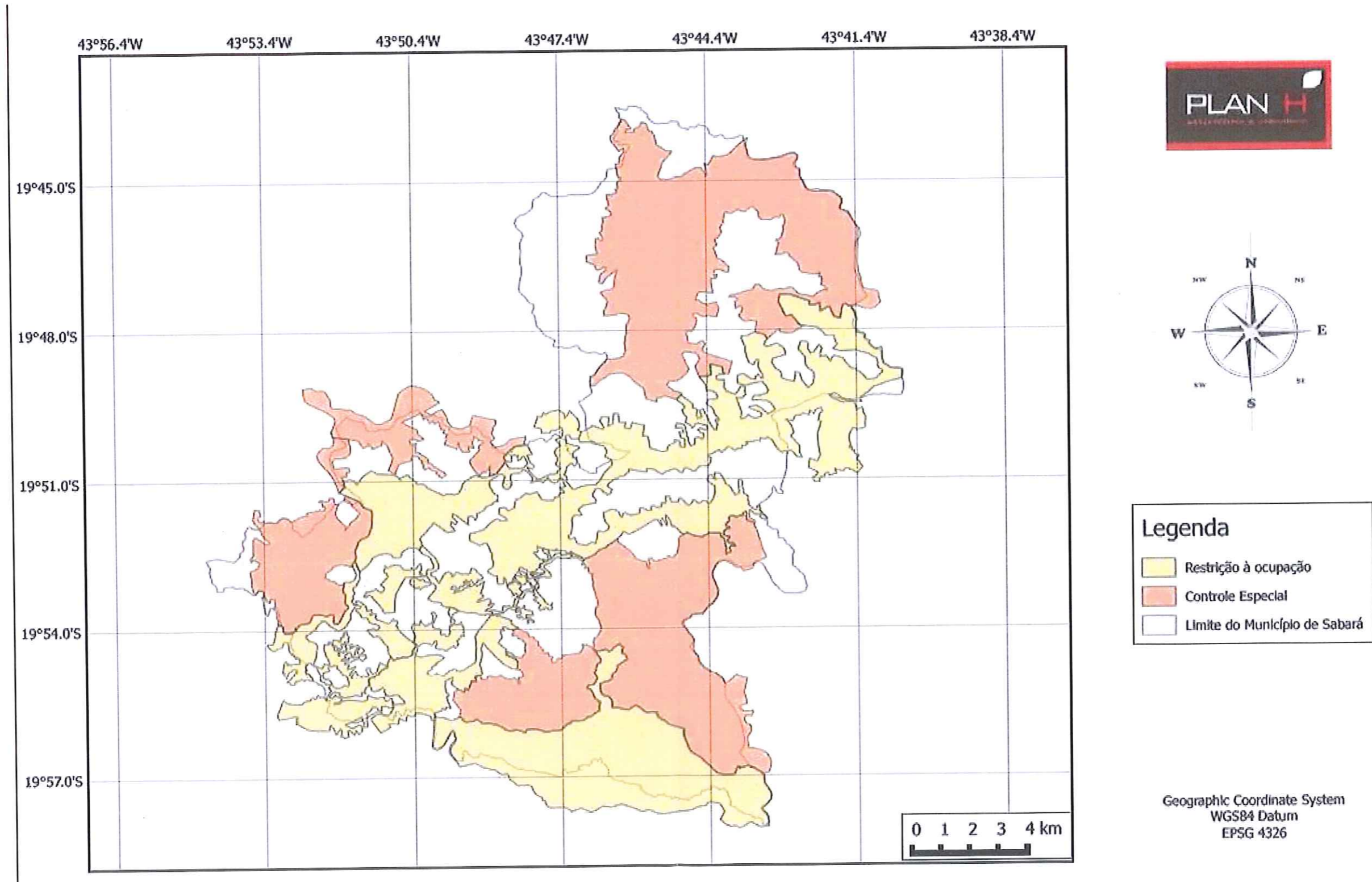
Legenda

-  Perímetro Urbano da Sede
-  Perímetro Urbano de Ravena
-  Perímetro Urbano de Pompéu
-  Limite do Município de Sabará

Geographic Coordinate System
WGS84 Datum
EPSG 4326

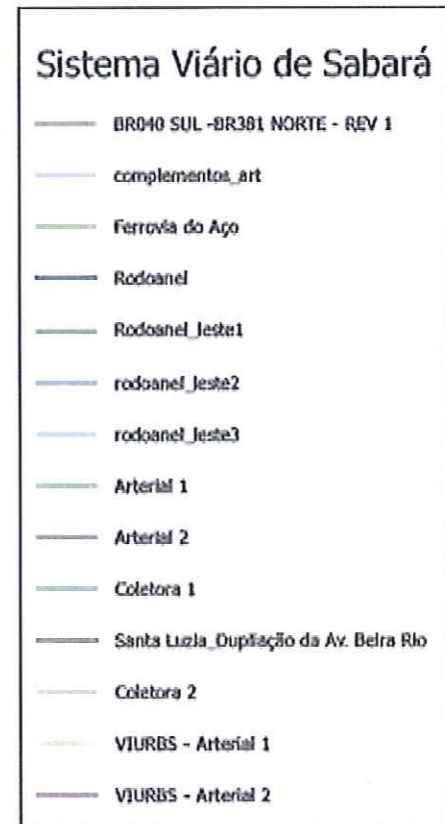
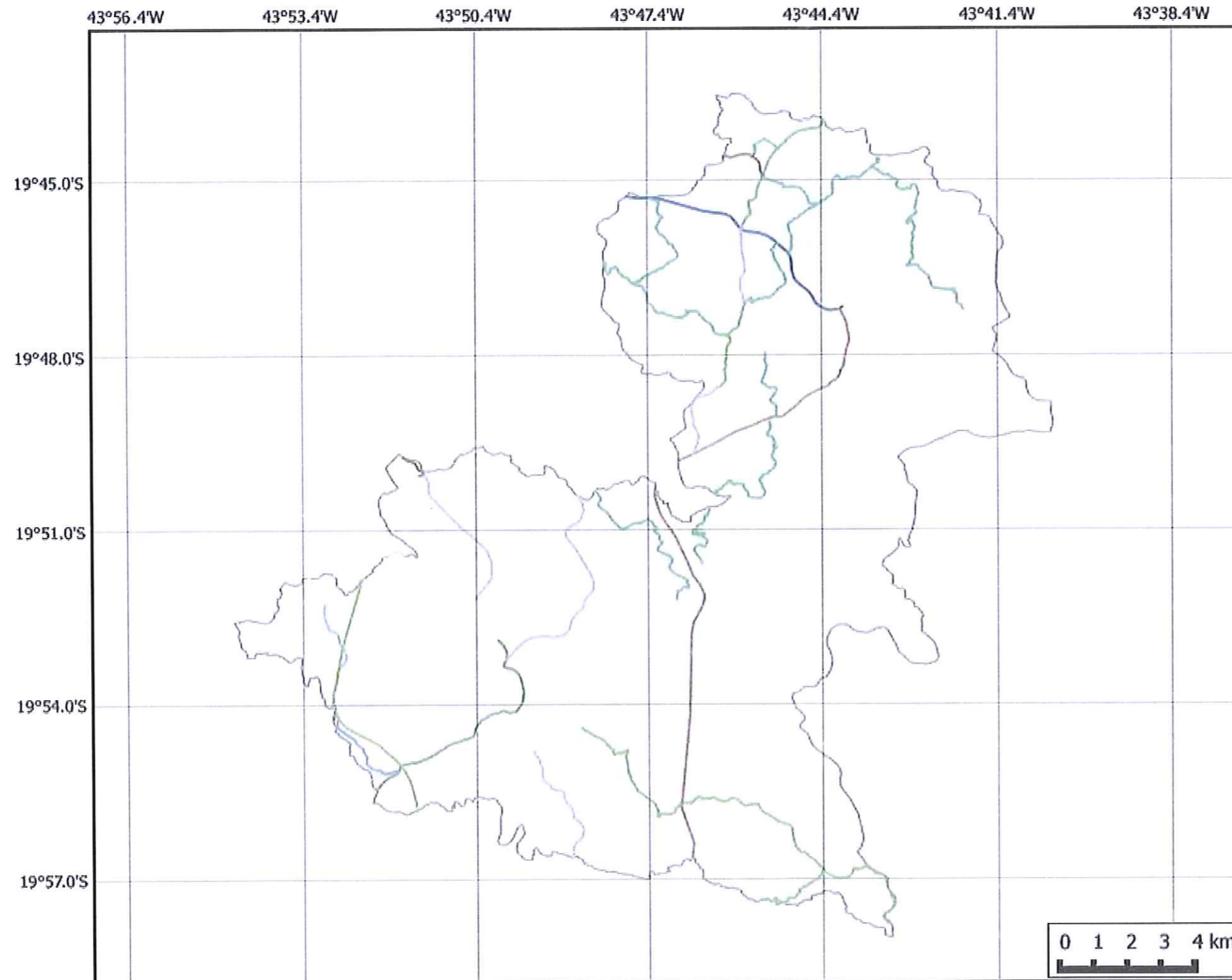


ANEXO IX-A
ÁREAS DE RISCO E CONTROLE ESPECIAL





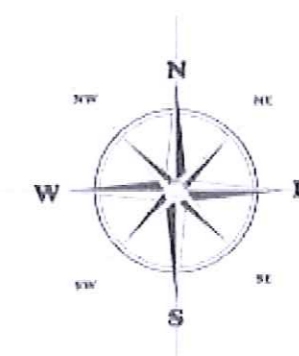
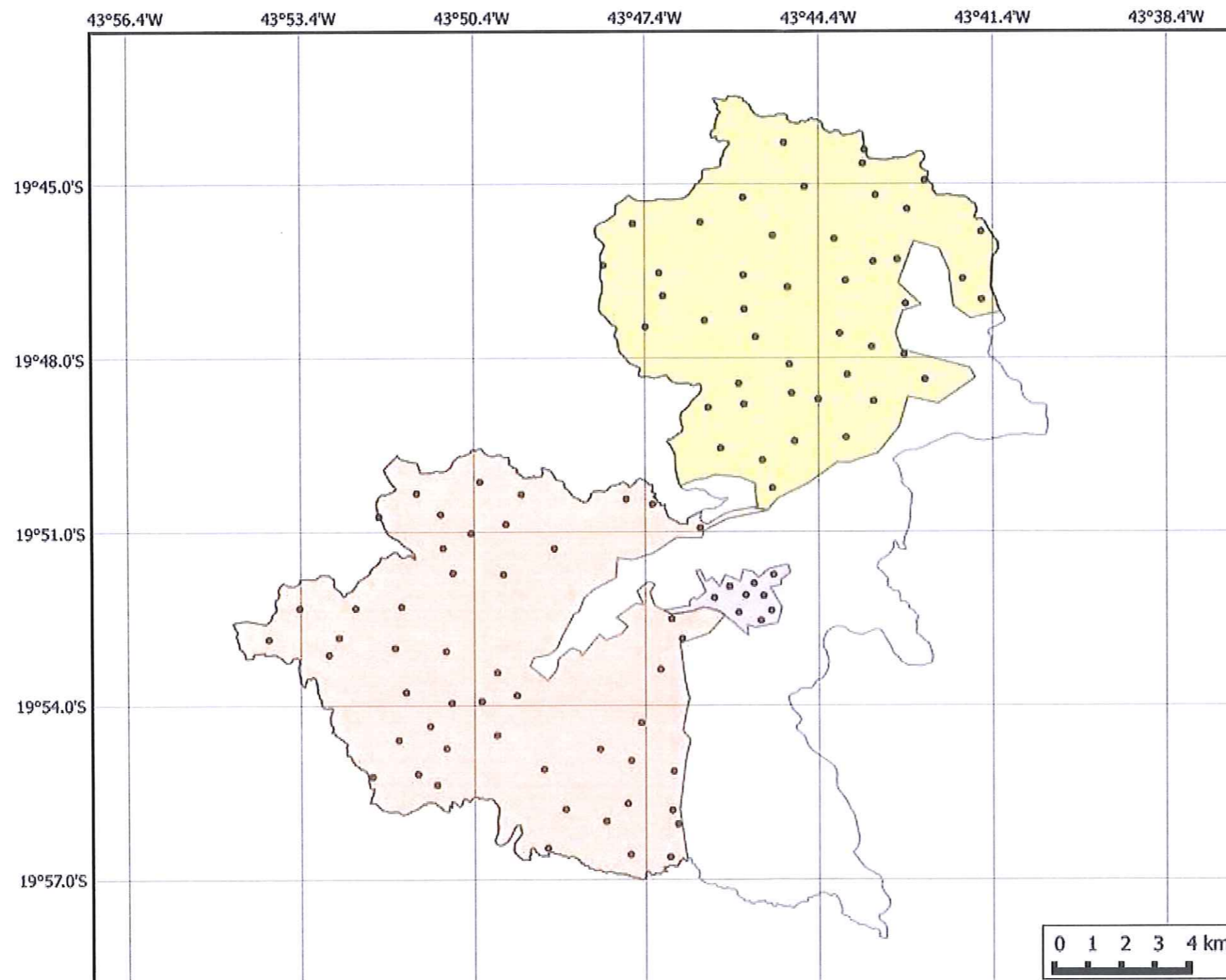
ANEXO IX-B
DIRETRIZES PARA O SISTEMA VIÁRIO



Geographic Coordinate System
WGS84 Datum
EPSG 4326



ANEXO IX-C
DIRETRIZES PARA A LOCALIZAÇÃO DE ÁREAS INSTITUCIONAIS



Legenda

- Áreas Institucionais
- Perímetro Urbano da Sede
- Perímetro Urbano de Ravena
- Perímetro Urbano de Pompéu
- Limite do Município de Sabará

Geographic Coordinate System
WGS84 Datum
EPSG 4326



NEXO IX-E
ÁREAS DE IMPORTÂNCIA AMBIENTAL (vide artigo 79, §1º)

