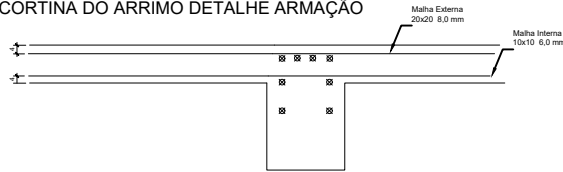
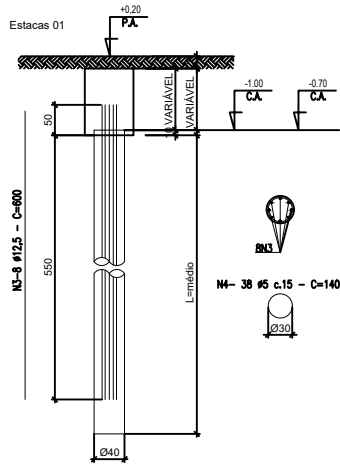


CORTINA DO ARRIMO DETALHE ARMAÇÃO



Resumo do aço pilar e estaca trecho 1

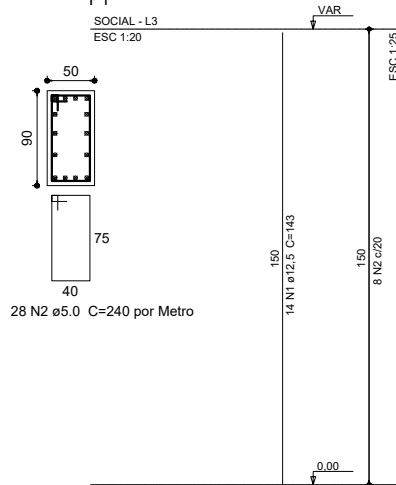
AÇO	DIAM (mm)	C.TOTAL (m)	PESO (kg)
CA60	5.0		111,50
CA50	12.5		561,33
PESO TOTAL (kg)			



ARMAÇÃO ESTACA ESCAVADA Ø40

P1

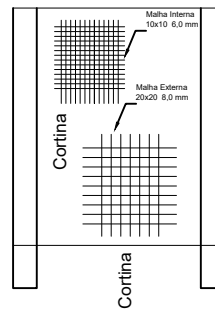
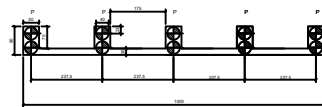
SOCIAL - L3
ESC 1:20



Resumo do aço malha trecho 1

AÇO	DIAM (mm)	C.TOTAL (m ²)	PESO (kg)
CA50	6.3	15	46,65
CA50	8.0	15	58,65
PESO TOTAL (kg)			

DETALHE RETANGULÃO DO ARRIMO TRECHO 1



PROJETO

PROPRIETÁRIO		PREFEITURA DE SABARÁ	
AUTOR DO PROJETO		PREFEITURA MUNICIPAL DE SABARÁ	
END. OBRA	CONTEÚDO		
RUA BARÃO ALTO FIDALGO SABARÁ-MG		PRANCHA 01/01	