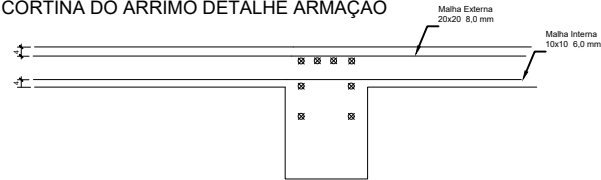
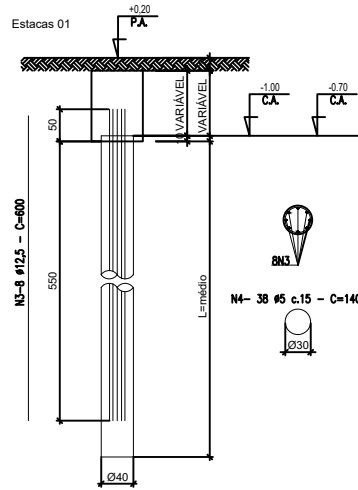


CORTINA DO ARRIMO DETALHE ARMAÇÃO

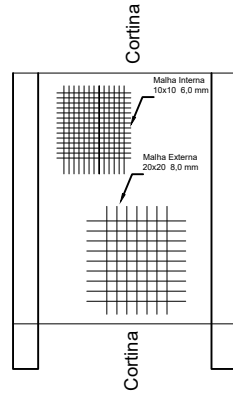


Resumo do aço pilar e estaca trecho 1

AÇO	DIAM (mm)	C.TOTAL (m)	PESO (kg)
CA60	5.0		320,82
CA50	12.5		1832,55
PESO TOTAL (kg)			

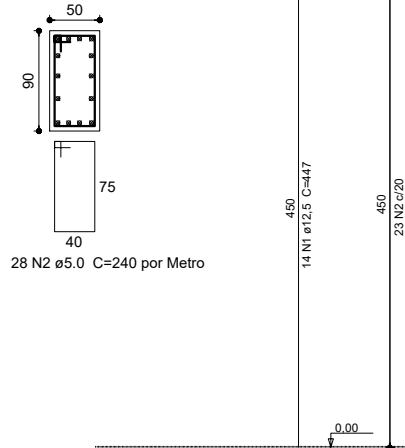


ARMAÇÃO ESTACA ESCAVADA Ø40



P1

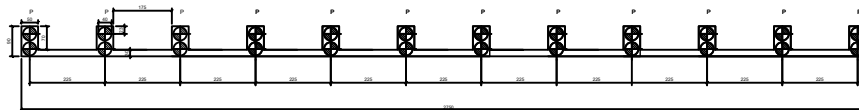
SOCIAL - L3
ESC 1:20



Resumo do aço malha trecho 1

AÇO	DIAM (mm)	C.TOTAL (m2)	PESO (kg)
CA50	6.3	123,75	384,86
CA50	8.0	123,75	483,86
PESO TOTAL (kg)			

DETALHE RETANGULÃO DO ARRIMO TRECHO 1



PROJETO

PROPRIETÁRIO	PREFEITURA DE SABARÁ	
AUTOR DO PROJETO	PREFEITURA MUNICIPAL DE SABARÁ	
END. OBRA	RUA BARÃO ALTO FIDALGO SABARÁ-MG	PRANCHA
CONTEÚDO		01/01